

SWAY -BRACE FITTING

**UTT 20
Pipe Clamp**

Function: Designed for bracing pipe against sway and seismic disturbance. The pipe attachment component of a sway brace system used in conjunction with a UTT Manufacturing structural attachment fitting, and joined together with a bracing pipe element forms a complete sway brace assembly. Sway brace assemblies are intended to be installed in accordance with NFPA 13 and the manufacturer’s installation instructions.

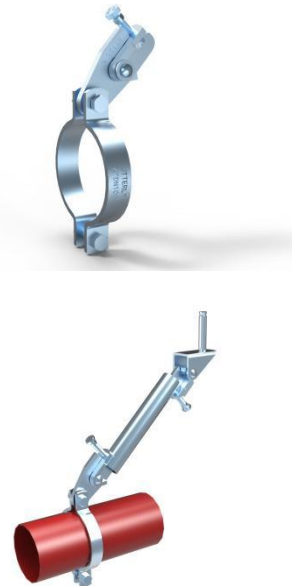
Type: Sprinkler Pipe Sch 10,Sch 40,GB/T 3091,JIS G3454

Size: Pipe size 2 " (50) thru 8 " (200)

Material: Carbon steel

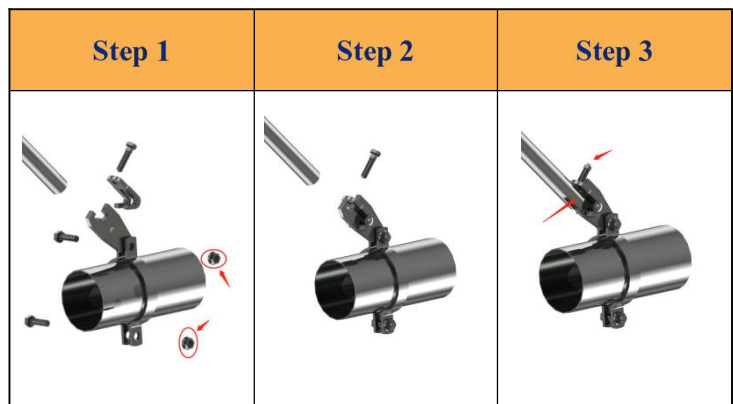
Finish: Electro-galvanized

Approvals:



UL Maximum Design Load					
Pipe Size		lbs.	kN	Wt. Each	
				1 " (25mm) Brace Pipe	
				lb.	kg
2	(50)	680	(3.02)	2.33	(1.06)
2½	(65)	680	(3.02)	2.42	(1.1)
3	(80)	680	(3.02)	2.55	(1.16)
4	(100)	680	(3.02)	2.73	(1.24)
5	(125)	1090	(4.84)	3.92	(1.78)
6	(150)	1370	(6.09)	4.29	(1.95)
8	(200)	1370	(6.09)	4.93	(2.24)

FM Maximum Design Load							
Pipe Size		Horizontal load ratings installation angle 30°-44°		Horizontal load ratings installation angle 45°-59°		Wt. Each	
		1 " (25mm) Brace Pipe					
		lbs.	kN	lbs.	kN	lb.	kg
2	(50)	1070	(4.75)	1440	(6.40)	0.92	(0.42)
2½	(65)	840	(3.73)	1120	(4.98)	1.01	(0.46)
3	(80)	1030	(4.58)	1560	(6.93)	1.08	(0.49)
4	(100)	650	(2.89)	890	(3.95)	1.21	(0.55)
6	(150)	830	(3.69)	1250	(5.56)	1.52	(0.69)
8	(200)	880	(3.91)	1150	(5.11)	1.81	(0.82)



Install:

Install the pipe clamp to the pipe, then install the bolts and nuts as the shown picture. The accessories of UTT20 use the sch40 1-inch pipe, The nuts torque of UTT 20 need to reach 100~115N • M to make all green marking lines visible in the bolts. After the installation of bolts & nuts and other accessories, the pipe must be clamped to the bottom of the accessories.